


NACHW

NATIONAL ASSOCIATION OF
COMMUNITY HEALTH WORKERS

Community Health
Workers united
nationally to support
communities in
achieving health,
equity and social
justice.





ABOUT NACHW

ABOUT NACHW

The National Association of Community Health Workers (NACHW) was founded in April 2019 after several years of planning and organizing by Community Health Workers (CHWs) and allies across the United States.

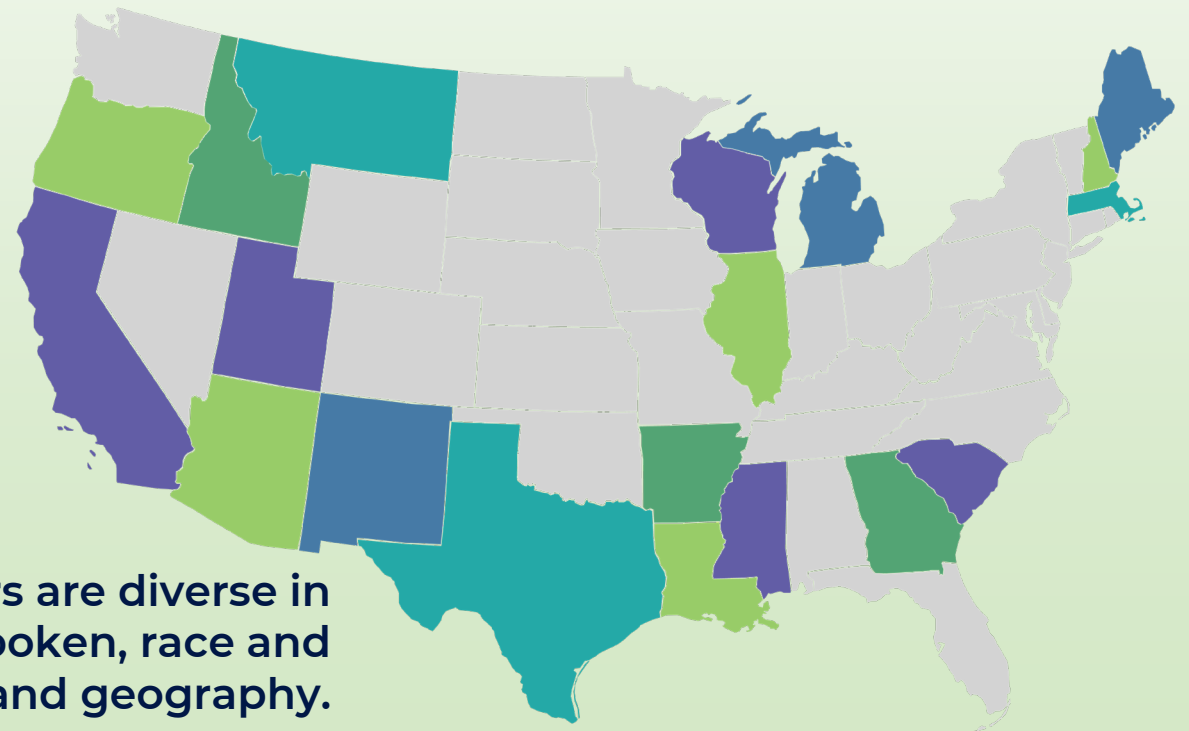
VISION : Community Health Workers united nationally to support communities in achieving health, equity and social justice.



NACHW BOARD OF DIRECTORS

- Teresa Campos-Dominguez (OR)
- Joelisa Castillo (WI)
- Naomi Cottoms (AR)
- Amber Culver (NH)
- Lillie Fox (SC)
- Ricardo Garay (TX)
- Wandy Hernandez-Gordon (IL)
- Kim Jay (IL)
- Lily Lee (CA)
- Susan Mayfield Johnson (MS)
- Paige Menking (NM)
- Floribella Redondo (AZ)
- Ashley Wennerstrom (LA)
- Geoff Wilkinson (MA)
- Luis Lagos (ID)
- Treva Smith (MO)

- Betsy Rodriguez (GA)
- Oreta Tupola (UT)
- Ben Hummel (ME)
- Iris Reano (Santo Domingo Pueblo, NM)
- Shannon Lijewski (MI)



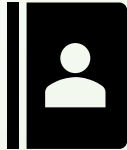
**Board members are diverse in
languages spoken, race and
ethnicity, and geography.**

NACHW COMMITTEES



Policy Committee

The Committee's mission is to engage and organize members who will work to analyze, respond to, and help shape public policy at the national, state and local level related to the Community Health Worker profession.



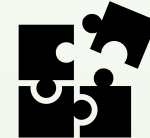
Nominations Committee

The Nominations Committee (NC) is composed of members of the board of directors who are appointed to serve in this capacity.



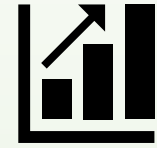
Executive Committee

The Executive Committee oversees all aspects of NACHW Board operations and provides guidance to committee chairs.



Development Committee

The Development Committee's purpose is to assist the Board and staff in procuring the funds necessary to achieve NACHW's mission and assuring the fiscal health of the organization.



Workforce Committee

The Workforce Committee convenes to facilitate the exchange of resources, ideas, and models around education, capacity, and infrastructure building, economic development/sustainability models.

**Learn more about our
committees [HERE](#)**

MEET OUR STAFF



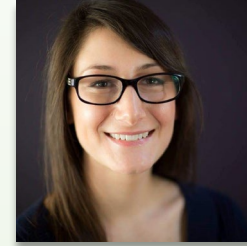
Denise O. Smith
Executive Director



Josie Scheindlinger
*Senior Operation & Projects
Manager*



Aurora GrantWingate
*Member and Partner
Engagement Manager*



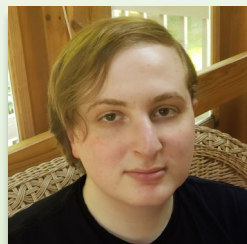
Allison Joslyn
*Data and Evaluation
Manager*



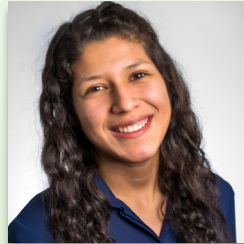
Neena Schultz
*Strategic Projects
Manager*



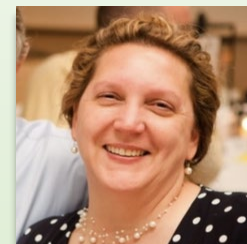
**Bernadine Mavhungu
Jeranyama**
*Senior Communications
Associate*



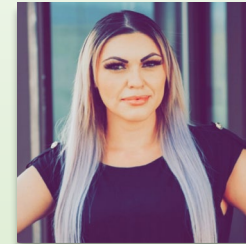
Peter Sallale
*Communications
Coordinator*



Karla Whatcott
*Marketing and
Projects Associate*



Marlys Vaughan
*Administrative and
Budget Coordinator*



Mikayla Trujillo
*Leadership
Development Manager*



Angie Kuzma
Policy Manager



Marlene Rivera
Executive Assistant



Katherine Martinez
Capacity Building Coordinator

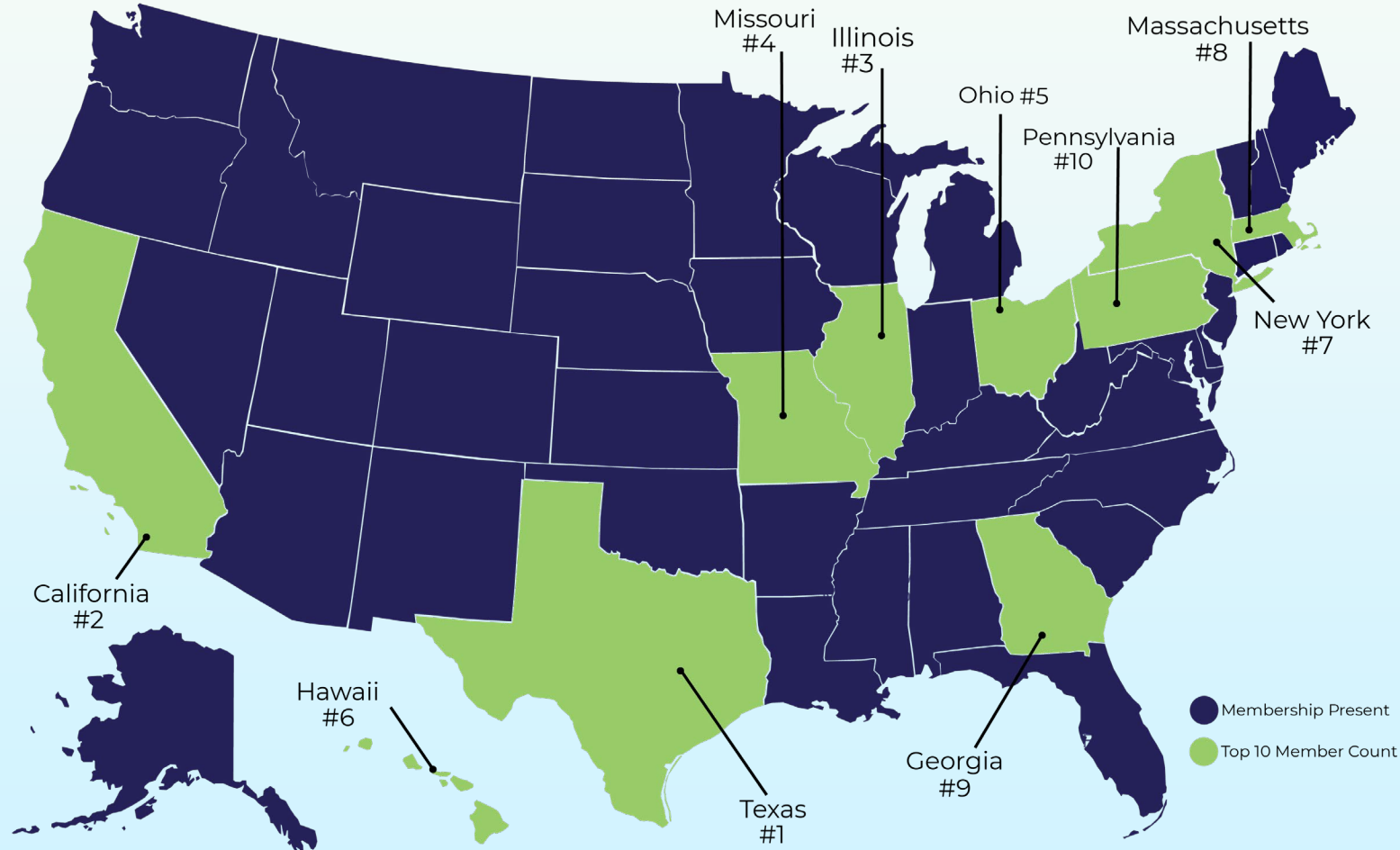


Keith Lancaster
Project Manager



MEMBERSHIP

NATIONAL MEMBERSHIP: 50 STATES AND GROWING!



Our members (CHWs, including promotoras and community health representatives) are working across sector, ethnicity, and geography to address direct service needs of special populations as well as the upstream social determinants of health.

NACHW continues to learn about its members, using member data to better understand and serve the workforce. This data helps us tailor monthly webinars, identify relevant opportunities, and remain at the forefront of issues that pertain to CHWs.

Membership Data 2022: Cross Sector and Multi-disciplinary Work

NACHW Members by Area of Expertise

SPECIALTY	#	SPECIALTY	#
Social Welfare/Economic Opportunity	361	Maternal/Child Health	194
Housing/Basic Needs	305	Addiction/Substance Use	167
Women's Health	295	Aging/Gerontology	135
Various Other	291	Children's Health/Pediatrics	132
Mental Health	285	Men's Health	131
Diabetes	271	Immigrant/Refugee Issues	122
Special Needs Population	249	HIV-AIDS/STIs	119
Nutrition	220	Cancer	101
Heart Health	194	Oral Health	94

Take Away:

Our members (CHWs, including promotoras and community health representatives) are working across sector, ethnicity, and geography to address direct service needs of special populations as well as the upstream social determinants of health.

NACHW continues to learn about its members, using member data to better understand and serve the workforce. This data helps us tailor monthly webinars, identify relevant opportunities, and remain at the forefront of issues that pertain to CHWs.

MEMBERSHIP BENEFITS

- Joining board committees
- Connect with over 2,000 fellow members across the country through the NACHW Members-Only Directory
- Read and share our NACHW Newsletter
- Access curated CHW policy documents in our new [CHW Document Resource Center](#)
- Access NACHW's [Policy Platform](#) in English and [Spanish](#), and many reports
- Access a curated list of [COVID-19 resources](#)
- Learn how you and your organization can [Partner with NACHW](#)
- And so much more!



VISIT OUR [MEMBERSHIP PAGE](#) AND DOWNLOAD RESOURCES


MEMBERSHIP BENEFITS: UNITY CONFERENCE

The annual meeting and interactive event designed for our CHW and ally members making a difference. CHWS and allies gather for keynotes, awards presentations, networking, and voting for open board positions. Organizations are invited to partner with us as official sponsors of the conference.

This year's theme is "The workforce we need for the world we want."

August 3 – 5, 2023
Austin, Texas
www.nachwunity.org

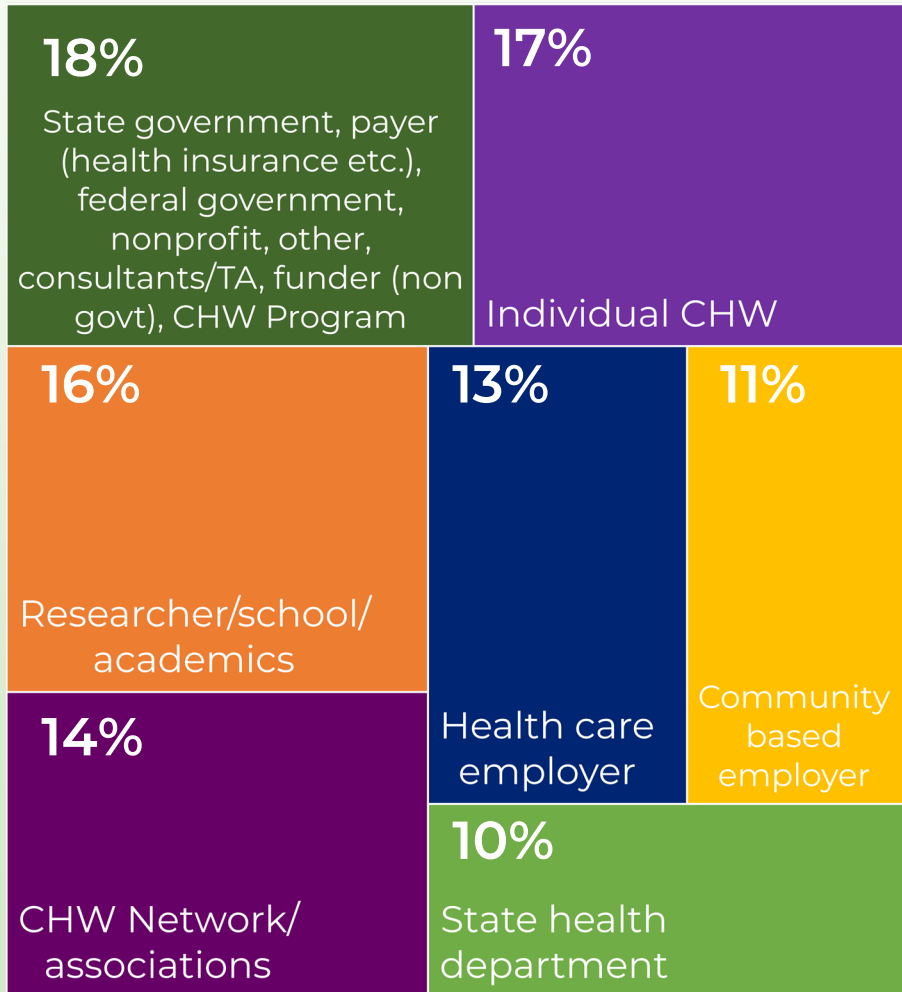




PROGRAMS AND INITIATIVES

CHW DOCUMENT RESOURCE CENTER (DRC)

DRC USERS BY TYPE



A Database for CHW Leaders, State and Local Government Practitioners, Employers and Payers. This is the nation's largest searchable collection of documents on policies around CHWs (mainly on the state level). Documents include: reports, policy studies, meeting minutes, brochures, state legislative bills and other materials that show how state-level groups have created definitions, policies and workforce development programs for CHWs.

Visit the [DRC](#) and start searching today!

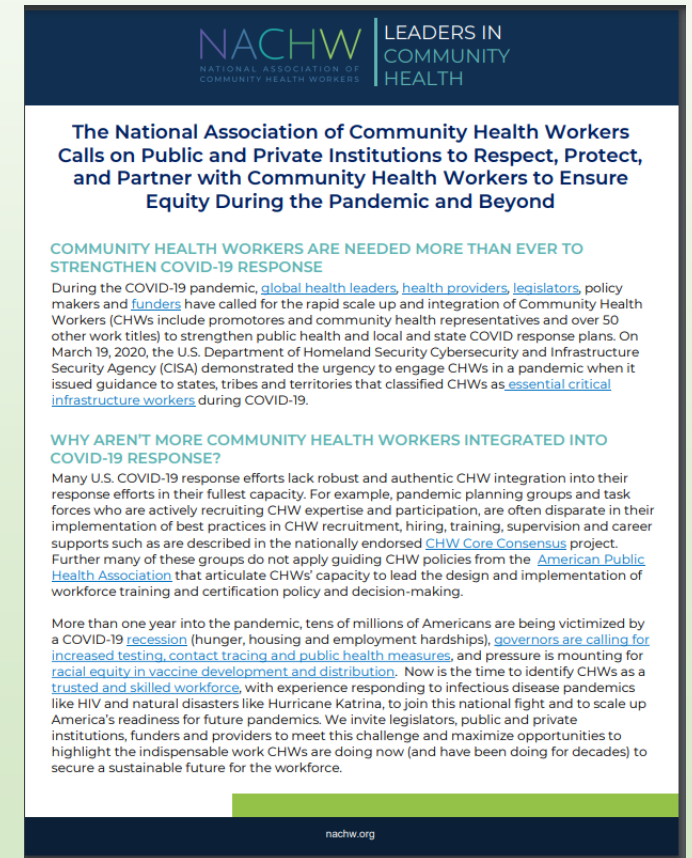
The CHW Document Resource Center was developed in collaboration with National Association of Chronic Disease Directors (NACDD) and the Centers for Disease Control Division of Chronic Disease Prevention and Health Promotion.

NACHW POLICY PLATFORM

This document is an important tool to promote national professional identity, leadership and capacity of CHWs and our Associations.

This document was created over the past year of town hall calls with over 30 CHW Associations, 3 national CHW polls, numerous partner meetings, member input on the Biden administration's national plan to Build Back Better and in consultation with many of you. It centers many of the policies and best practices that are already nationally endorsed within our field and can be applied to COVID-19 response efforts as well as long term policy development.

Available in [English](#) and [Spanish](#)

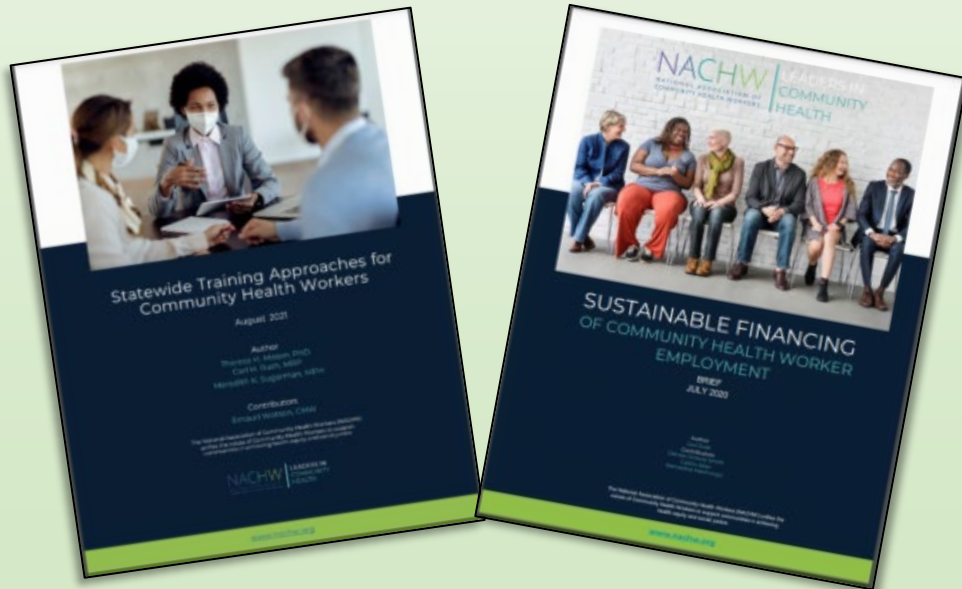


CHW POLICY AND ADVOCACY

POLICY PRIORITIES

- The Six Pillars- [The Six Pillars of Community Health Workers – NACHW](#)
- NACHW Policy Committee - Join us
- NACW Policy Resources- [CHW Document](#)

- Quarterly policy calls led by NACHW's policy committee
- Monthly convenings of CHW networks and leadership
- Policy review and advisements
- Policy endorsements
- Publishing of reports on CHW policy such as financing, training, Networks policy and employer response during pandemics



VISIT THE [POLICY PAGE](#)

FOCUS ON DIABETES



The American Diabetes Association (ADA) with support from VSP® Vision Care and Regeneron Pharmaceuticals Inc. has launched the Focus on Diabetes™ (FOD) initiative to focus on the crucial role annual comprehensive eye exams play in the early detection, intervention, and prevention of eye disease and vision loss caused by diabetes.

As part of Focus on Diabetes, the ADA has partnered with [NACHW](#) to create [a resource](#) training on diabetes and how it relates to eye health.

On May 10th, 2022, NACHW partnered with the ADA to present a webinar on our partnership and to celebrate Healthy Vision Month. On August 30th, 2022, NACHW and the American Diabetes Association held a Roundtable for Community Health Workers Working to Prevent and Manage Diabetes and Eye Health.



DATA FOR ACTION: NACHW NATIONAL CHW SURVEY SUMMIT SERIES

NACHW invites CHWs and allies to take part in engaging with the National CHW Survey findings during the months of September and October: **Data for Action: NACHW National CHW Survey to Advance CHW Professional Identity, Leadership and Capacity (4-Part Series)**



As part of the Johnson & Johnson Our Race to Health Equity initiative to eradicate racial and social injustice, this engaging 4-part series will center findings from the National survey launched in 2021 with a snapshot of 867 CHWs represented across each CHW title, region, sector, race/ethnicity identities, and values. The series will strengthen our call to action to unify, gain and build recognition of the CHW professional identity, and advance our leadership.



COVID-19

NACHW Amplifies the Roles of CHWs to Strengthen the Public Health Infrastructure during COVID-19!

- COVID-19 WEBPAGE WITH RESOURCES FOR CHWS AND OUR COMMUNITIES
- GATHERING CHW DATA AND EXPERIENCES
- ADVOCATING FOR NATIONAL POLICIES AND CAPACITY NEEDS
- PROMOTING CHW SELF-CARE WEBINARS AND RESOURCES
- CENTERING CHWs AS LEADERS TO IMPROVE COVID-19 EMERGENCY RESPONSE



Visit our [COVID-19 webpage](#)

NACHW and COVID-19



The role that CHWs play as first responders in the outbreak of COVID-19

Expert
Panel

Betsy Rodriguez, BSN,
MSN, DCS
Centers for Disease
Control and Prevention

Colleen Barbaro, PhD
Centers for Disease
Control and Prevention

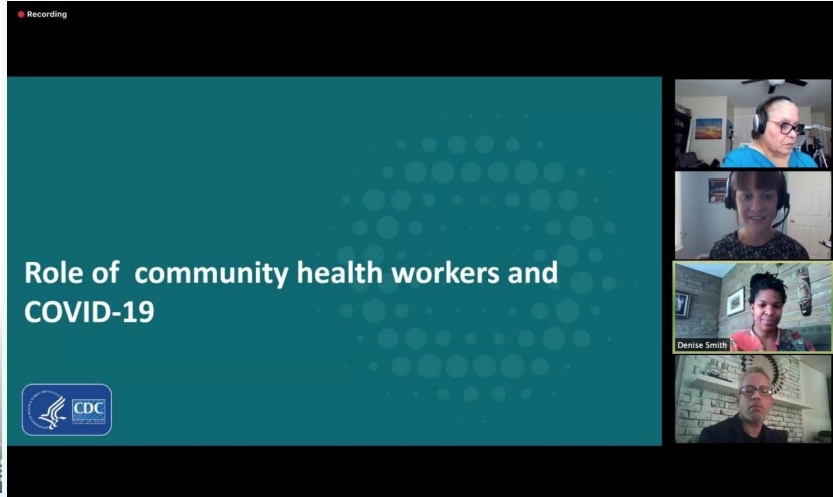
Denise Octavia Smith, MBA, CHW, PN
National Association of Community
Health Workers



Community Health Workers (CHWs) and COVID-19: The Importance of Recruiting CHWs into State COVID-19 Responses

With Denise Octavia Smith, MBA, CHW, PN
Executive Director, National Association of Community Health Workers

0:05 / 7:51



HEALTH AFFAIRS BLOG

RELATED TOPICS:
COVID-19 | PUBLIC HEALTH | PANDEMICS | ACCESS TO CARE | SYSTEMS OF CARE

To Strengthen The Public Health Response To COVID-19, We Need Community Health Workers

Denise O. Smith, Ashley Wennerstrom

MAY 6, 2020

10.1377/hblog20200504.336184



“CHWs – and NACHW – should be front and center as federal and state leaders seek to move out of the pandemic and re-open society.”

- Claire Qureshi, Community Health Acceleration Partnership at the World Health Organization



National Strategy Call with Health Begins

ACCESS TO COVID-19 HOME RAPID TESTS

In partnership with over 10 national organizations and in coordination with the Biden Administration White House, NACHW co-created a [national campaign](#) to engage community-based healthcare workers in accessing at-home rapid COVID-19 test kits from www.covidtests.gov.



The campaign included 4 days of townhall style meetings, communications toolkits, resources in **5 languages**, a survey of COVID-19 related needs, and a new webpage with zip code filters prioritizing highly vulnerable communities. The efforts led to over **630,000** orders placed and **1.2 million** website visitors in the span of two days.





NEWS AND PUBLICATIONS

NACHW IN THE NEWS

The Washington Post

U.S. News & WORLD REPORT

USA TODAY

MEDPAGE
TODAY

HealthAffairs

KHN
KAISER HEALTH NEWS

HAWAII

NEWS NOW



Direct Relief
Deliver a world of good.



**CONNECT
WITH NACHW**

PARTNER WITH US

NACHW is proud to partner with many organizations across the country at the local, state, national, and federal level. When an organization reaches out for partnership, we like to have an introductory meeting with them. We look forward to partnering with organizations align with our mission, vision, values, and capacity as a young growing organization

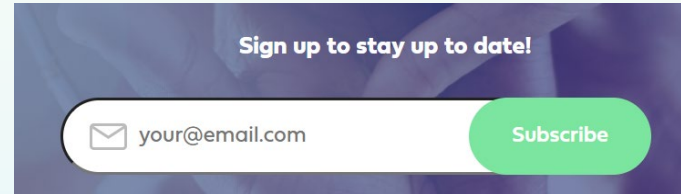
Partnerships Include:

- Invite NACHW to speak at your event
- Partner as a CHW or Ally organization
- Partner through sponsorship of our strategic objectives
- Sponsorship of the Unity Conference
- Policy review
- Much more

<https://nachw.org/partner-with-nachw/>



GET THE LATEST NACHW NEWS



Sign up on our homepage (www.nachw.org) to receive our monthly newsletter, COVID-19 newsletter, and other communications



Follow us at @chwnational



Find us at
[Linkedin.com/company/chwnational](https://www.linkedin.com/company/chwnational)