

COMMUNITY HEALTH WORKERS IN THE TIME OF COVID 19

Theanvy Kuoch, Executive Director
Khmer Health Advocats Inc.

2020



The graphic features a large, dark blue, irregularly shaped area that resembles a speech bubble or a drop. This area is surrounded by several concentric, lighter blue borders. In the bottom-left corner, two white hands are raised, palms facing forward. Each hand has a small green heart on its palm. The hands are positioned as if they are reaching towards the blue area. The background of the entire image is white.

LESSON ONE: HEALTH
AND HEALING HAPPENS
IN COMMUNITY

The Community Team

Community Based Organizations

CBO is the cultural center and houses Community Health Workers and is continuously “circling with other agents”

Departments of Public Health

Researchers

Universities and Student interns

Religious Organizations
And traditional healers

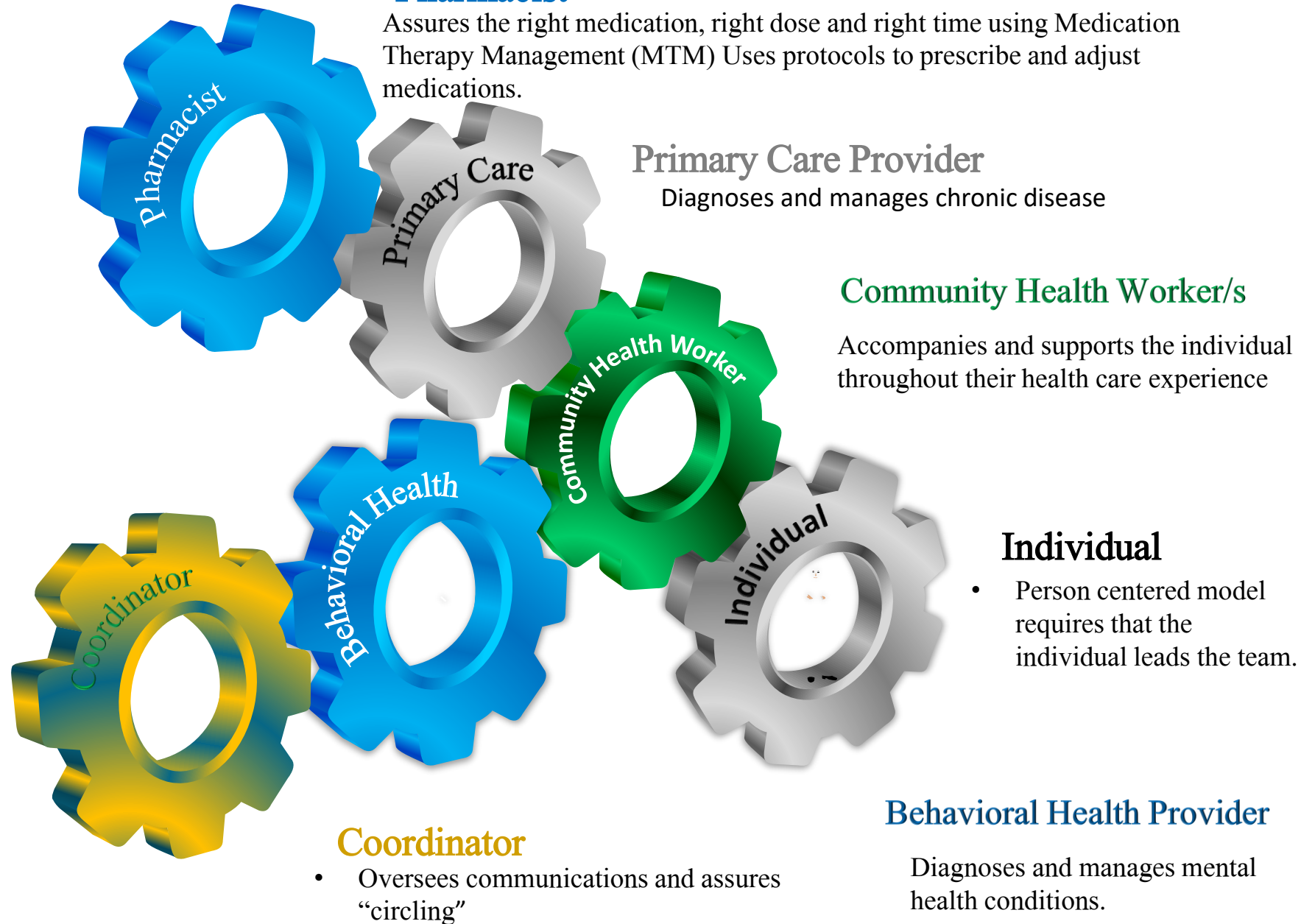
Community Health Workers II and III



The graphic features a large blue circle with a white border. Inside the circle, the text 'LESSON TWO: A CRISIS IS AN OPPORTUNITY' is written in white, uppercase letters. Below the text, two white hands are shown with green hearts on their palms. The hands are positioned as if they are holding or presenting the text. The background behind the hands is a green, leaf-like shape.

LESSON TWO: A CRISIS
IS AN OPPORTUNITY

The Cross cultural Team



LESSON THREE: HAVE A PLAN



C**ommunication**-Can our community communicate about this virus COVID-19? Do they have information their Native language? Can they read? Do they have the ability to videoconference with their health care providers? Can they call for help in an emergency?

A**ccess**- Do they know how to get health care now that clinics and offices are closed? Can they get testing?

R**esources**- do they have the human resources they need? Do they have family? Do they have health insurance? Do they have food?

E**ducation**-How do CHWs teach them what they need to know to be safe? How can we protect them from scams and conspiracy theories that cause stress?

S**trategies** – Strategies require that we work closely with the community to collect information, assess what we know and decide on our priorities. It requires that we seek out the young generation as well as the old and find those who may have gotten lost.

The graphic features a large blue circle with a white border. Inside the circle, the text 'LESSON FOUR: TALK ABOUT THE HARD STUFF' is written in white, bold, uppercase letters. Below the text, two white hands are shown with green hearts on their palms, set against a green background that curves around the bottom left of the blue circle.

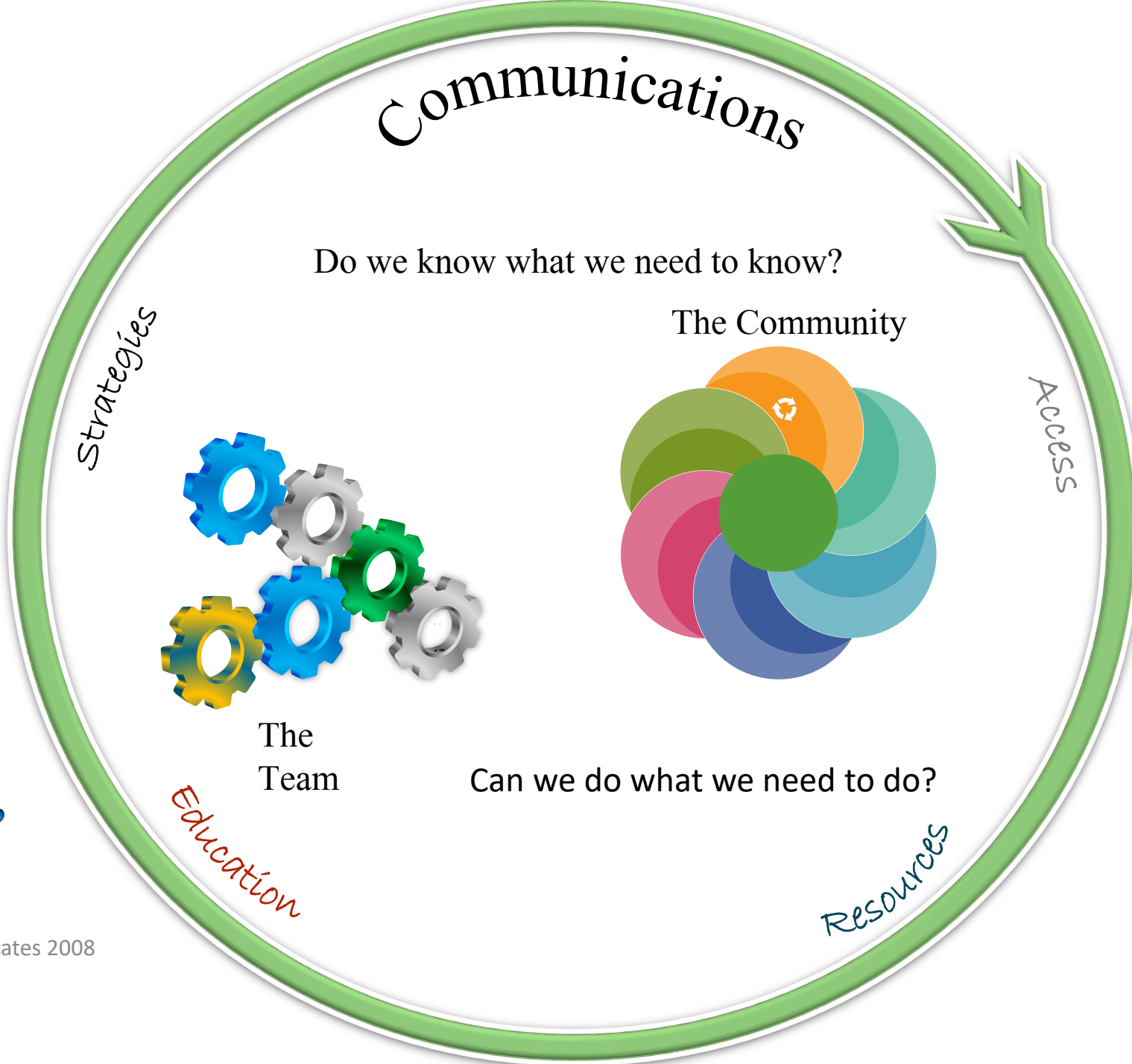
LESSON FOUR: TALK
ABOUT THE HARD
STUFF



LESSON FIVE: THE
WORK OF THE
COMMUNITY HEALTH
WORKER HAPPENS IN A
CIRCLE, NOT A
STRAIGHT LINE



“Circling”





We can get
through this if
we all work
together.

Theanvy Kuoch, Executive Director
Khmer Health Advocates Inc.
1125 New Britain Ave
West Hartford, CT 06110
Tel. (860)561-3345