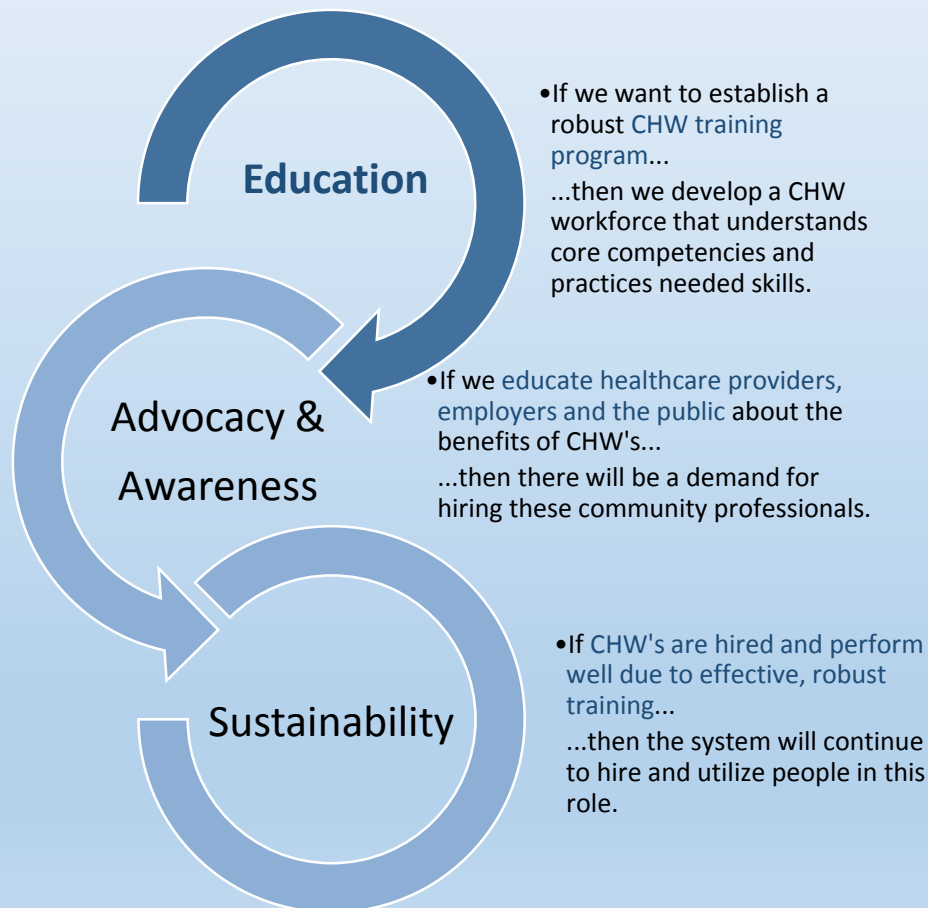


A Learning Process Emphasizing Core Competencies

We are a learning institution with a strength in workforce development using the competency-based model.

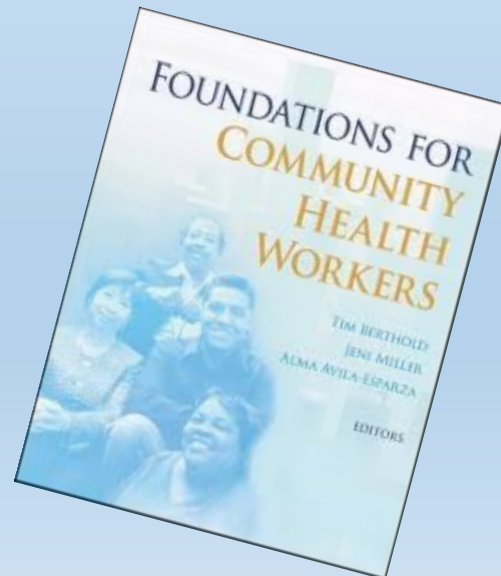


CHW CORE COMPETENCIES

- Self-awareness
- Professionalism & Conduct
- Service Coordination & System Navigation
- Education to Promote Healthy Behavior Change
- Advocacy
- Individual & Community Capacity Building
- Effective Communication Strategies
- Cultural Responsiveness
- Documentation & Reporting
- Use of Public Health Concepts & Approaches
- Individual Assessment
- Community Assessment

Course Details

- **100 classroom hours**
 - 4-hour units (1/week = 25 weeks, 2/week = 12.5 weeks)
 - Content builds from self-awareness to community advocacy
- **60 hours service learning** (*credit may be awarded for past experience*)
 - 1) Resource gathering
 - 2) Networking
 - 3) Job Shadowing



	4-hr class	Topic	Text	Handouts, Focus, etc.	Primary Core Competency(ies)	Guest Speaker Suggestions
Intro to CHW	1	Begin the Journey...Connect with Your Resources!	Syllabus	Syllabus, CHW Characteristics , strengths, time management	Interpersonal, Communication	Introductions – guest speaker not advised
	2	Intro to the Profession	1,2	CHW Core Competencies , Interdisciplinary focus	Knowledge Base, Capacity Building	Community Health Worker
	3	Intro to Public Health	3	Social Determinants of Health	System Coordination & Navigation	Local Public Health official
Systems Intro	4	Promoting Health Equality	4	Local disparities data & Healthy People 2020	System Coordination & Navigation	Safety Net Clinic, Legal Aid
	5	Intro to Globalization and Health Explanation of Service Learning	5	Models Service Learning Packet & Local Resource Guide	System Coordination & Navigation Knowledge Base	NGO or Government representative
	6	Intro to Health Care and Health Policy	6	Safety Net handouts/Resources	Advocacy	MD, RN, Safety Net Clinic
Working with Clients	7	Practicing Cultural Humility	7	Relevant News Item	Cultural Responsiveness and Mediation	Cultural competence initiative, Cultural rep
	8	Working with Individual Clients	8	CHW Code of Ethics , HIPAA, boundaries	Client Assessment, Interpersonal	Mandated DFS worker, RN, Social Worker
	9	Conducting Client Interviews	9	Psychosocial Assessment	Client Assessment, Communication	Clinical Social Worker
	10	Motivational Interviewing for Behavior Change	10	Motivational interviewing video	Capacity Building, Knowledge Base	Counselor
	11	Case Management	11	Documentation	Service Coordination	CHW, RN
	12	Home Visiting	12	Safety tip card	Client & Community Assessment	CHW, other home visitor, Police Officer
	13	Conflict Resolution	13	Tip sheet	Communication, Interpersonal	Mediator
Personal Care	14	Burnout & Stress Management	14	Tip sheet, exercises	Self, Client, Community Assessment	RN, Counselor
	15	Professional Skills	15	Resume for peer review	Organization, Communication,	Employer
Working with Community	16	Promoting Health at the Community Level	16	Examples of local projects	Advocacy, Teaching, Capacity Building	Nonprofit focused on health
	17	Diagnosing Community	17	Local statistics/resources	Community Assessment	Public health official
	18	Health Outreach & Using Arts	18, 21	Using art in final project	Teaching, <u>Commun.</u>	Arts non-profit
	19	Facilitating Training	19	Tip sheet	Teaching, <u>Commun.</u>	Facilitator, Trainer
	20	Group Facilitation	20	Tip sheet	Teaching, <u>Commun</u>	Facilitator, Trainer
	21	Community Organizing	22	Local/National Stories	Advocacy, Cap Building	Community Advocate

“

This class has been very challenging. I had to face some fears and move outside my comfort zone. I believe I have grown in speaking in front of an audience and believing what I have to say is valuable. I am realizing I am an advocate for myself, my client and my community.

”

CHW Student



Thank you!!

Sandy Snook, MSW

Community Health Worker Program Specialist

Metropolitan Community College

816-604-4918

Sandy.Snook@mccckc.edu

